



## 55-RWB TABLE WASHER

### FEATURES

- 200-Gallon solution tank
- 55" working height above the table
- Large volume oscillating spray manifold for faster cleaning
- Non-clogging adjustable composite nozzles
- Cycle timer - 0-60 minutes
- Gas models comes standard with an ecology burn-off box
- Tank clear out is to the side for easy access, and sloped for easy cleaning
- Sludge rakes are standard so large amounts of sludge can be removed
- Door mounted rotary table
- 10-gauge steel construction

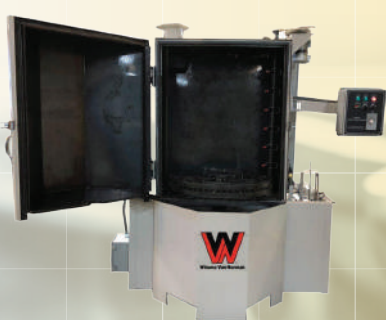


**Designed to remove oil, grease, grime, dirt, and other contaminants off a various amount of parts.**

**The cabinet door construction allows for easy loading and unloading.**

Model	Details
<b>Work Envelope</b>	44" diameter x 55" h
<b>Pump</b>	15HP
<b>Table Weight Capacity</b>	1,500 lbs.
<b>Overall Dimensions</b>	98" l x 120" w x 136" h

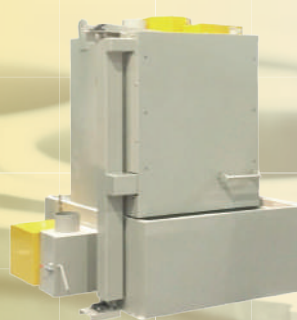
### OTHER TABLE WASHERS:



**WVN-5000**



**WVN-2044**



**36-RWB**



**72-RWB**